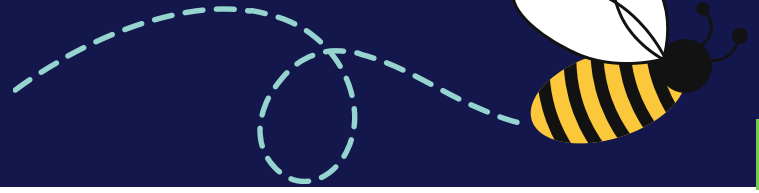


What's the Buzz?

by *The Scholarly Teacher*

ScholarlyTeacher.com



Buzzwords in Education Explained

Join the conversation! Examine trending buzzwords, eliminate misconceptions, and discover how to apply the strategy in your teaching space.

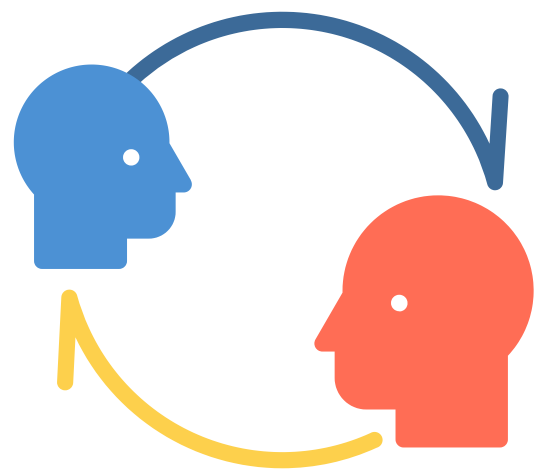
ATTRIBUTION



Ascribing a cause for behavior to either a disposition (personal trait) or situation (environmental influence).

WHEN DOES THIS HAPPEN?

Our response to others' behavior is processed through our attributions. Any time you imagine a reason for behavior, whether a personal choice or extenuating circumstances, that is attribution.



HOW DOES IT IMPACT US?



Our perception of behavior shifts our response to that person. For example, if a student is dozing off in class, you might think "They are rude" (dispositional), but you could also think "Maybe they haven't had a good meal today" (situational). We can respond to the exact same behavior with empathy or judgment, based on our attributions.

WHY IS THIS IMPORTANT TO FACULTY?

Developing self-awareness and suspending judgment of behaviors allows the student-faculty interaction to promote rapport and create space for learning and compassion.

