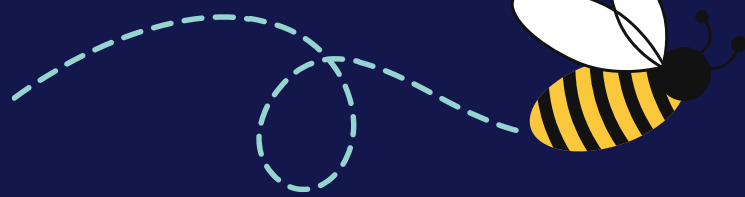


# What's the Buzz?

by The Scholarly Teacher

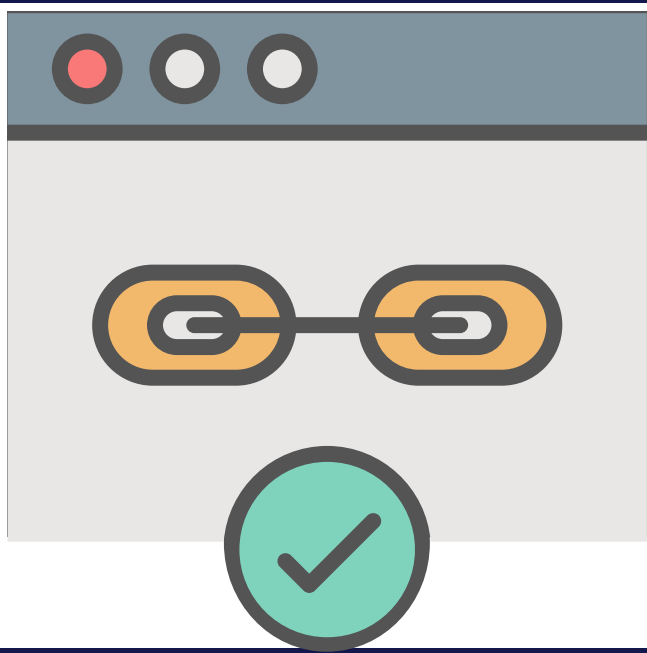
ScholarlyTeacher.com



## Buzzwords in Education Explained

Dive in! Examine popular teaching approaches. Discover how to apply the strategy and eliminate misconceptions about these trending buzzwords.

## FORMATIVE ASSESSMENT

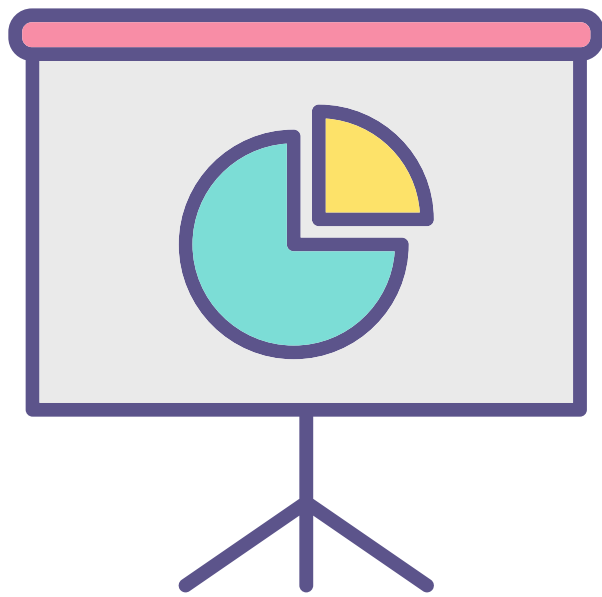


Planned, ongoing, low-stakes, informational feedback about a learner's progress. Benefits learners ("How am I learning?") as well as the instructor ("How am I teaching?").

### WHEN TO USE IT?

Before, during, or at the end of a session, depending on how the instructor plans to use the feedback.

Results can guide the upcoming lesson, check-in on how learners understand a tricky concept, or make plans for the next session.



### HOW DO I USE THIS IN MY CLASSROOM?

In many different ways!

- Session Start: "Entrance Ticket" to gather what learners already know.
- During a Session: Questioning or using an audience response device (e.g., clickers, whiteboards) to check understanding/points of confusion.
- Session End: "Exit Ticket" or One-Sentence Prompt for learners to think about what they learned (metacognition).



### WHY USE IT?

The instructor gains insights on when/how to modify a session to better assist learners to master a topic. Learners can check their understanding.

