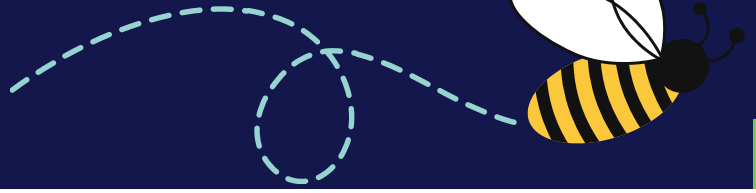


What's the Buzz?

by The Scholarly Teacher

ScholarlyTeacher.com

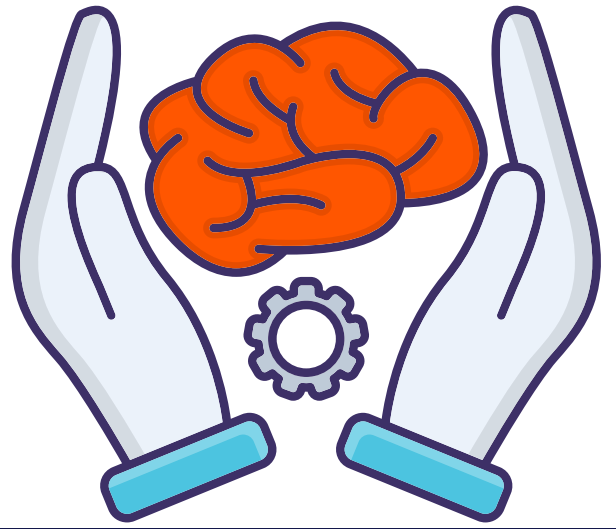


Buzzwords in Education Explained

Dive in! Examine popular teaching approaches. Discover how to apply the strategy and eliminate misconceptions about these trending education buzzwords.

ZPD (ZONE OF PROXIMAL DEVELOPMENT)

The area between what a learner can do without assistance and what a learner can do with guidance/support.



HOW DO I USE THIS IN MY CLASSROOM?

Model curiosity!

- Make general connections to prime learners.
- Build their confidence in what they already know & think they can learn.
- Consider skeleton notes, worksheets, glossaries, and models,
- Encourage low-stakes risk-taking.
- Provide growth-minded feedback & stretch goals as learners demonstrate competency.



WHEN TO USE IT?

Intentionally guide learners to move from reliance on instructor for expertise and support to greater independence with functional knowledge.



Across time, move students from a point of topical illiteracy to competency, fluency, and mastery of material.

WHY USE IT?



In this "just right" area, learners are making progress and growing to understand the concepts in the lesson. They are being challenged by the content, not bored or overwhelmed by it.