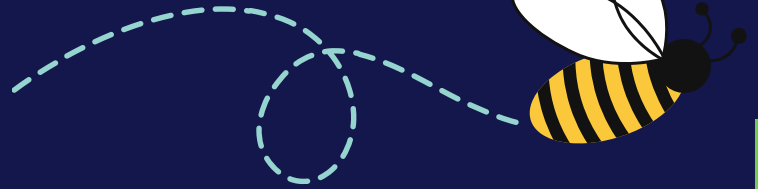


What's the Buzz?

by The Scholarly Teacher

ScholarlyTeacher.com



Buzzwords in Education Explained

Dive in! Examine popular teaching approaches. Discover how to apply the strategy and eliminate misconceptions about these trending buzzwords.

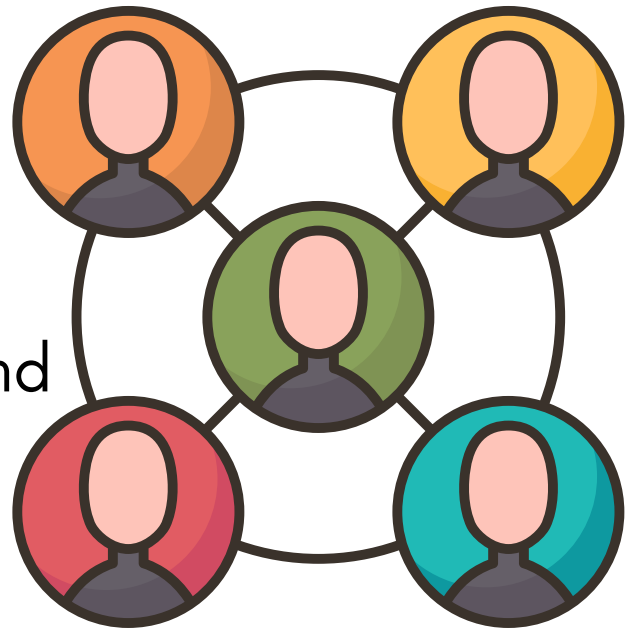
COMMUNITY BUILDING



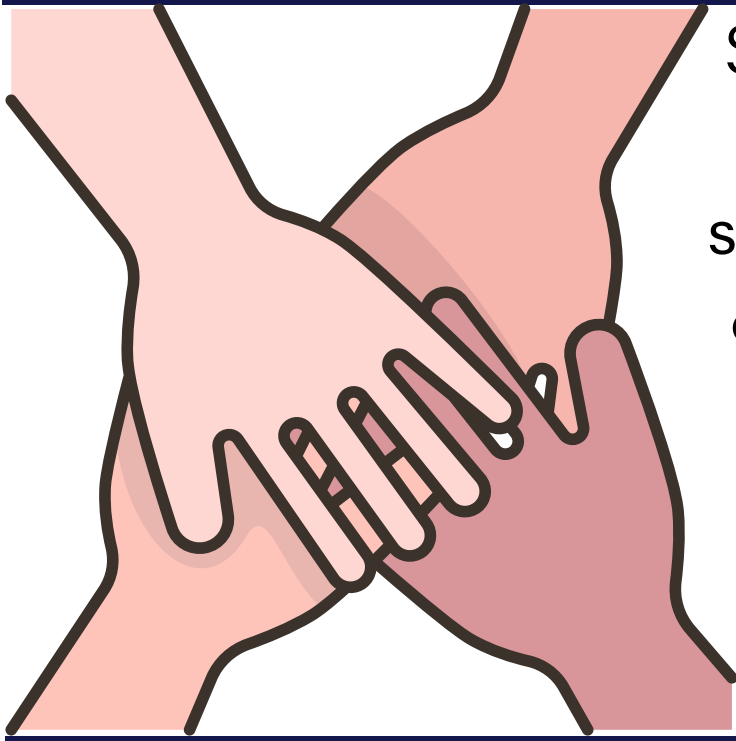
Enhancing group connection.

WHEN TO USE IT?

When forming a new group of individuals. If individuals can connect on a personal level before starting content work, they are more relaxed and tend to be more productive and communicative.



HOW DO I USE THIS IN MY CLASSROOM?



Start with icebreakers (also called fire starters). Find some way for the learners to connect to one another via shared experiences or perspectives and bring about a sense of community.

WHY USE IT?

Having a healthy social and emotional environment provides room for personal and academic growth, directly contributing to increased learning and better outcomes.

