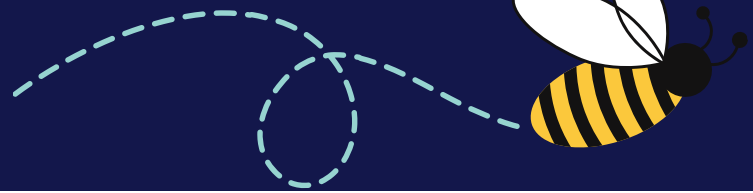


What's the Buzz?

by *The Scholarly Teacher*

ScholarlyTeacher.com



Buzzwords in Education Explained

Join the conversation! Examine trending buzzwords, eliminate misconceptions, and discover how to apply the strategy in your teaching space.

SCALE-UP

Student-**C**entered **A**ctive Learning **E**nvironment with **U**pside-down **P**edagogies; an engaged learning strategy originally designed for high-enrollment courses with labs.



WHEN TO USE IT?



Whenever active/engaged learning strategies are desired. SCALE-UP classrooms provide structure, which is particularly beneficial for first-gen students and students from marginalized groups.

HOW TO USE IT?

SCALE-UP was designed to facilitate interaction among students in small groups. Give students an interesting problem or issue to investigate. Emphasize that they should use analytical, critical thinking, and synthesizing skills, along with measurements and observations, to deepen learning. The instructor serves as coach, moving around the room to check-in as needed. See scaleupstem.ncsu.edu for more information.

WHY USE IT?



Since its inception at NC State, student grades, attendance rates, positive attitude, and critical thinking skills have all increased.