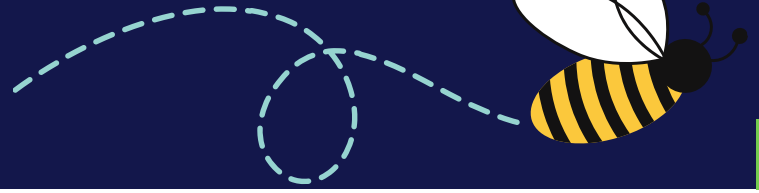


What's the Buzz?

by *The Scholarly Teacher*

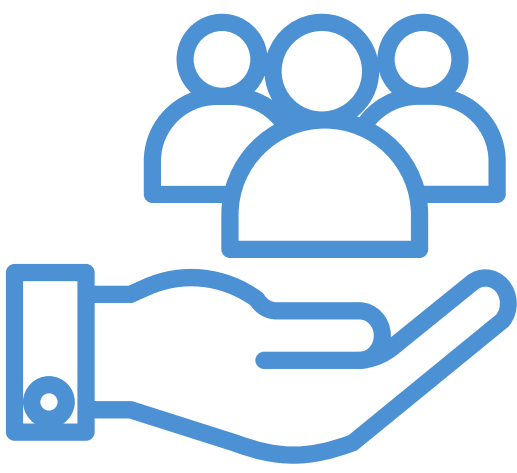
ScholarlyTeacher.com



Buzzwords in Education Explained

Join the conversation! Examine trending buzzwords, eliminate misconceptions, and discover how to apply the strategy in your teaching space.

SERVICE-LEARNING



Service-learning is a real-world teaching strategy that combines meeting course learning outcomes, helping specific community organizations, and reflecting on subsequent learning.

WHEN TO USE IT?

When students can complete academic work that results in a direct benefit to the community.



HOW TO USE IT?

Identify a community need that aligns with your course content/objectives. Check with colleagues who have recently implemented service-learning to get feedback on your ideas and to clarify any potential liability concerns. Then, meet with a representative from a community organization to determine how your course can best be structured to directly support their need. Don't forget to provide students with opportunities to reflect on their learning.

WHY USE IT?



Extensive research over several decades has consistently shown that service-learning improves student learning outcomes. Students also see the real-world value of how what they are learning can be used to help others.